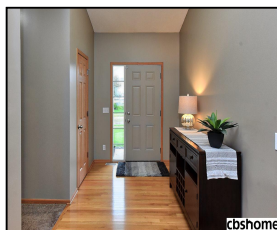
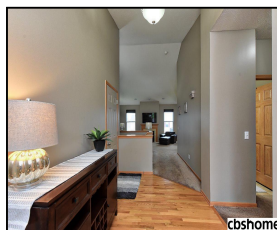




cbshome
A BERKSHIRE HATHAWAY AFFILIATE



cbshome



cbshome



cbshome



cbshome



cbshome

Remarks

Move-in ready walkout ranch on a great street in Shadowbrook! Open floor plan w/ cathedral ceilings. Fresh paint & neutral color palette throughout. Beautiful kitchen w/ quartz countertops, island, & hardwood floors. Spacious family room w/ fireplace. Large master bedroom w/ walk-in closet. Awesome finished lower level w/ great space for entertaining & bar area. Lots of storage space & rough-in to add 3rd bathroom in lower level. This is one you won't want to miss out on! AMA

Features & Amenities

County	Douglas County	Bedrooms	3	MLS#	21820154
Subdivision	Shadowbrook	Bathrooms	2	Status	ACTIVE
Living Room Size	17.9 x 15.0	# of Rooms	8	Tax Amount	\$4,350
Dining Room size		# of Fireplaces	1	Tax Year	\$2,017
Kitchen Size	17.0 x 12.2	Garage Spaces	2	Year Built	2007
Master Bedroom Size	14.5 x 12.6	3rd Floor SqFt	0	Walk-Out	Yes
Bedroom #2 Size	10.2 x 10.0	2nd Floor SqFt	0	Basement	
Bedroom #3 Size	10.4 x 10.0	Main Floor SqFt	1494	Grade School	Heritage
Bedroom #4 Size		Total Finished	2507	Jr.High School	Bennington
Family Room Size	41.0 x 15.2	SqFt		High School	Bennington
Other Room 1 Size	11.0 x 7.4	Finished Below	1013		
		Grade			
		Lot Dimensions	56 x 117		



April Williams

CBSHOME

April.Williams@cbshome.com

402-301-3012

Information has not been verified, is not guaranteed and is Copyright (c) 2018 CBSHOME