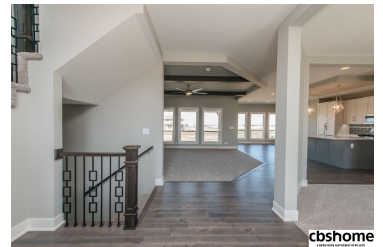
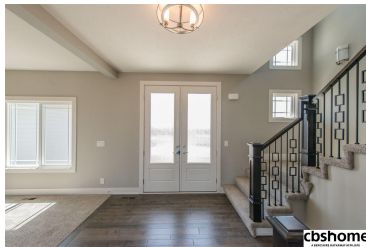




MLS # 21820125 | 4 Bedrooms | 3 Bathrooms | 3 Garage Spaces | 2560 Total Sqft | 2018 Year Built

m
AFFILIATE



Remarks

Showcase Homes popular 2 story plan that has been redesigned w/ new features! Generous upgrades & modern features throughout. Gorgeous kitchen w/ shaker cabinets, large island w/ quartz, & huge hidden walk-in pantry w/ coffee bar. Beautiful family room w/ shiplap accents, built-in cabinets, & linear fireplace. Awesome master suite w/ walk-in shower & connects to laundry room. Bonus loft area on 2nd floor. Walking distance to Aspen Creek ELEM & JRH. Pictures of similar home.



April Williams
CBSHOME
April.Williams@cbshome.com
402-301-3012

Information has not been verified, is not guaranteed and is Copyright (c) 2018 CBSHOME