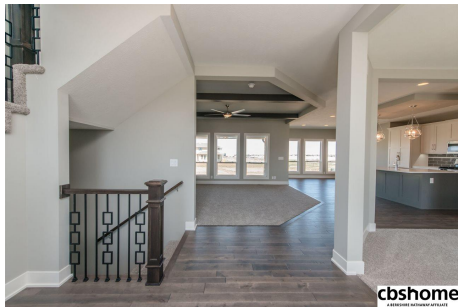
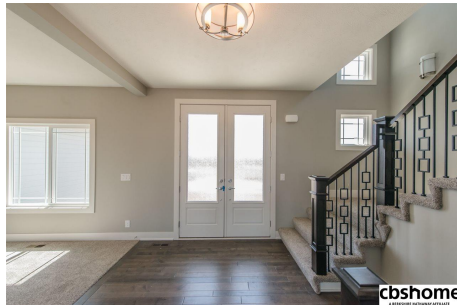


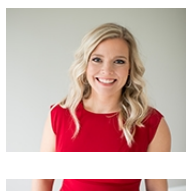


MLS# 21820125  
 Status Active  
 Bedrooms 4  
 Bathrooms 3  
 Total Sqft 2560  
 Year Built 2018  
 Subdivision Aspen Creek



Remarks

Showcase Homes popular 2 story plan that has been redesigned w/ new features! Generous upgrades & modern features throughout. Gorgeous kitchen w/ shaker cabinets, large island w/ quartz, & huge hidden walk-in pantry w/ coffee bar. Beautiful family room w/ shiplap accents, built-in cabinets, & linear fireplace. Awesome master suite w/ walk-in shower & connects to laundry room. Bonus loft area on 2nd floor. Walking distance to Aspen Creek ELEM & JRH. Pictures of similar home.



April Williams  
 CBSHOME  
 April.Williams@cbshome.com  
 402-301-3012

Information has not been verified, is not guaranteed and is Copyright (c) 2018 CBSHOME