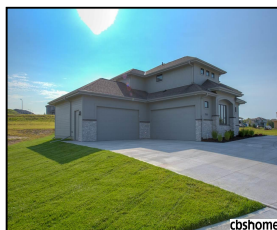
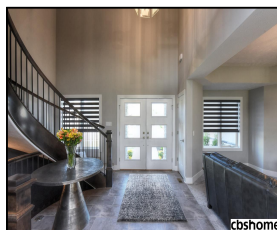




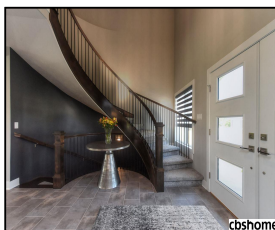
**cbsHOME**  
A BERKSHIRE HATHAWAY AFFILIATE



**cbsHOME**



**cbsHOME**



**cbsHOME**



**cbsHOME**



**cbsHOME**

## Remarks

Luxury living at it's finest. This beautiful 2 story is less than a year old & features: 5 BR, 5 BAs, circular staircase, hdwd floors, gourmet kitchen w/Lg center island & SS appliances. Floor to ceiling stone FP, every bedroom has a walk-in closet & is connected to a bath. Spacious Master Ste w/step down sitting room, whirlpool tub & Lg closet. 2nd floor laundry, finished LL w/Lg wet bar, cov'd patio & oversized 4 car garage. Why build when you can have it now for thousands less? Welcome Home.

## Features & Amenities

<b>County</b>	Douglas County	<b>Bedrooms</b>	5	<b>MLS#</b>	21818637
<b>Subdivision</b>	Andresen Meadows	<b>Bathrooms</b>	5	<b>Status</b>	ACTIVE
<b>Living Room Size</b>	19.10x19.11	<b># of Rooms</b>	13	<b>Tax Amount</b>	\$543
<b>Dining Room size</b>	15.10x10.11	<b># of Fireplaces</b>	1	<b>Tax Year</b>	\$2,017
<b>Kitchen Size</b>	21.7x14.4	<b>Garage Spaces</b>	4	<b>Year Built</b>	2017
<b>Master Bedroom Size</b>	13.0x16.0	<b>3rd Floor SqFt</b>	0	<b>Walk-Out</b>	No
<b>Bedroom #2 Size</b>	11.25x12.0	<b>2nd Floor SqFt</b>	1497	<b>Basement</b>	
<b>Bedroom #3 Size</b>	11.6x11.9	<b>Main Floor SqFt</b>	1455	<b>Grade School</b>	Manchester
<b>Bedroom #4 Size</b>	11.0x11.0	<b>Total Finished SqFt</b>	4247	<b>Jr.High School</b>	Elkhorn Grandview
<b>Family Room Size</b>		<b>Finished Below Grade</b>	1295	<b>High School</b>	Elkhorn
<b>Other Room 1 Size</b>	11.7x12.0	<b>Lot Dimensions</b>	139.78x140.00x62 .34x133.93		



**Ralph Marasco**

CBSHOME

Ralph.Marasco@cbsHOME.com

402-697-4272

Information has not been verified, is not guaranteed and is Copyright (c) 2018 CBSHOME