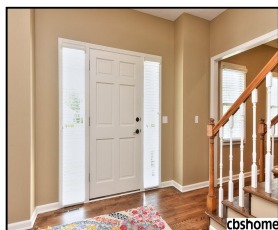
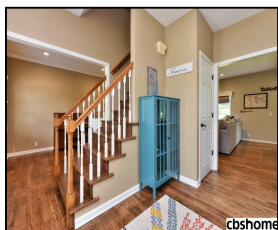


3905 N 158th Street

\$274,000


 cbsHOME
 A BERKSHIRE HATHAWAY AFFILIATE


cbsHOME



cbsHOME



cbsHOME



cbsHOME



cbsHOME

Remarks

Beautifully updated 2 story with wonderful curb appeal. Hardwood floors throughout main floor. Great finish in lower level with 3/4 bath and a wet bar.

Features & Amenities

County	Douglas County	Bedrooms	4	MLS#	21816923
Subdivision	Walnut Ridge	Bathrooms	4	Status	PENDING
Living Room Size	13.4x10.4	# of Rooms	9	Tax Amount	\$4,736
Dining Room size	12x11.4	# of Fireplaces	1	Tax Year	\$2,018
Kitchen Size	22.8x12.8	Garage Spaces	2	Year Built	1998
Master Bedroom Size	19.6x12.6	3rd Floor SqFt	0	Walk-Out	No
Bedroom #2 Size	12.4x11	2nd Floor SqFt	1096	Basement	
Bedroom #3 Size	14.4x11.8	Main Floor SqFt	1170	Grade School	Standing Bear
Bedroom #4 Size	12.4x10.4	Total Finished	3085	Jr.High School	Buffett
Family Room Size	20.8x14.8	SqFt		High School	Burke
Other Room 1 Size	16.7x9.3	Finished Below	819		
		Grade			
		Lot Dimensions	78x125		


Joye Wees

CBSHOME

Joye.Wees@cbsHOME.com

402-880-1023

Information has not been verified, is not guaranteed and is Copyright (c) 2018 CBSHOME