

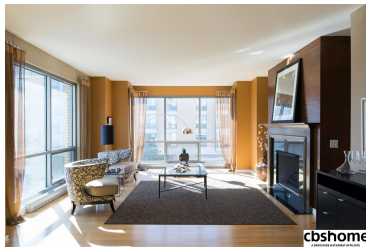


**cbshome**

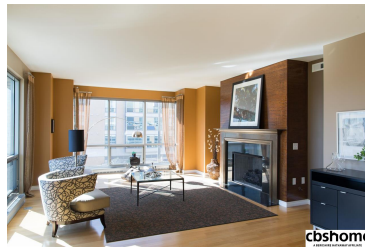
MLS # 21816752 | 2 Bedrooms | 2 Bathrooms | 1 Garage Spaces | 1491 Total Sqft | 2010 Year Built



**cbshome**  
A BERKSHIRE HATHAWAY AFFILIATE



**cbshome**



**cbshome**



**cbshome**

Remarks

SE facing with full balcony, view of Turner Park & Farnam, PLUS terrace off master giving a spot for morning coffee - over looking Farnam. Concierge service, under-ground heated & secured parking. 24 hour security and roof top clubroom with kitchen, fireplace and outdoor seating.



**Julie Hergert**  
CBSHOME  
Julie.Hergert@cbshome.com  
402-676-0005



**John Begley**  
CBSHOME  
john.begley@cbshome.com  
402-968-4527

Information has not been verified, is not guaranteed and is Copyright (c) 2018 CBSHOME