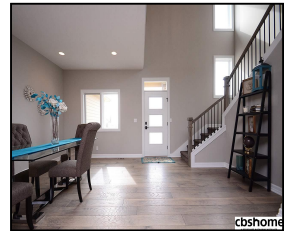
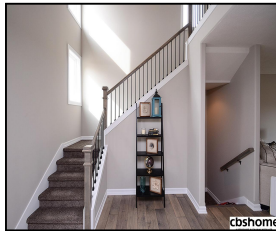
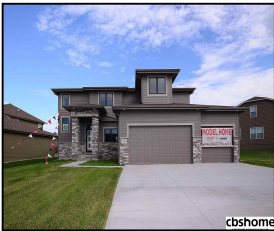


7616 N 156 Avenue

\$379,000



### Remarks

OPEN SUNDAY 1-4! Upscale "Sidney" Two story in Pine Creek Built by Mercury Builders. Main floor is open with tall ceilings & good flow between great room, kitchen & dining Area. Stunning upgrades like granite & quartz counter tops, tile floors & backsplashes, modern fixtures, master suite has walk-in closet & dual sinks. These homes are built w/high end finishes.

### Features & Amenities

<b>County</b>	Douglas County	<b>Bedrooms</b>	4	<b>MLS#</b>	21814473
<b>Subdivision</b>	Pine Creek	<b>Bathrooms</b>	3	<b>Status</b>	ACTIVE
<b>Living Room Size</b>		<b># of Rooms</b>	8	<b>Tax Amount</b>	\$696
<b>Dining Room size</b>	10'3x14'3	<b># of Fireplaces</b>	1	<b>Tax Year</b>	\$2,017
<b>Kitchen Size</b>	13'7x14	<b>Garage Spaces</b>	3	<b>Year Built</b>	2018
<b>Master Bedroom Size</b>	17x14	<b>3rd Floor SqFt</b>	0	<b>Walk-Out</b>	No
<b>Bedroom #2 Size</b>	11'6x11	<b>2nd Floor SqFt</b>	1348	<b>Basement</b>	
<b>Bedroom #3 Size</b>	11'6x11	<b>Main Floor SqFt</b>	1304	<b>Grade School</b>	Pine Creek
<b>Bedroom #4 Size</b>	11'6x10	<b>Total Finished SqFt</b>	2652	<b>Jr.High School</b>	Bennington
<b>Family Room Size</b>	22'4x14'6	<b>Finished Below Grade</b>	0	<b>High School</b>	Bennington
<b>Other Room 1 Size</b>		<b>Lot Dimensions</b>	117.16x163.23x36.57x154.40		



**Brent Blythe**  
CBSHOME  
Brent.Blythe@cbshome.com  
402-676-5081



**Chad Blythe**  
CBSHOME  
chad.blythe@cbshome.com  
402-578-9822

Information has not been verified, is not guaranteed and is Copyright (c) 2018 CBSHOME