

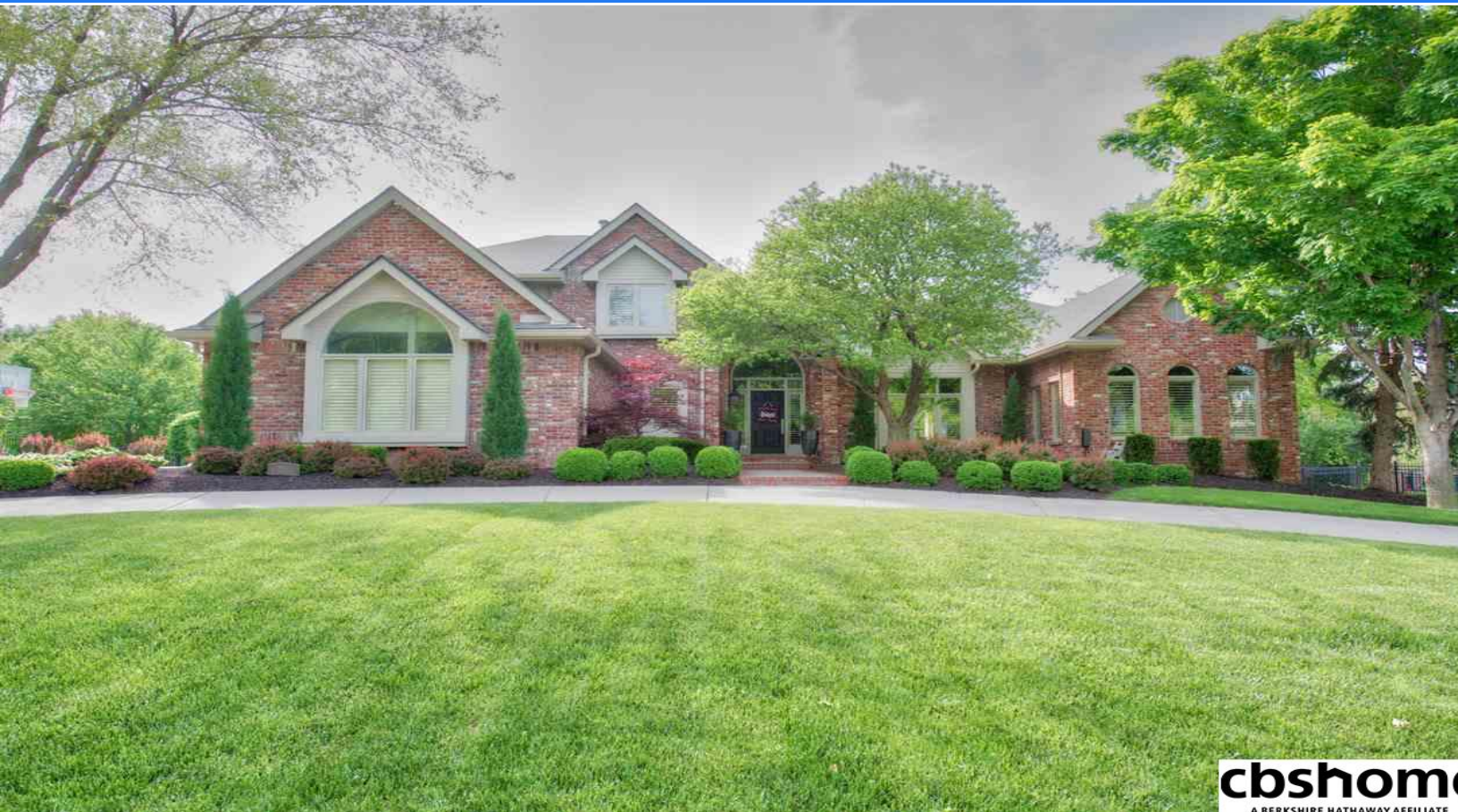
# 641 N 163 Street

## \$899,000



**Del Andresen**  
 CBSHOME  
 andresengroup@cbshome.com  
 402-690-2288

MLS # 21814316 | 5 Bedrooms | 5 Bathrooms | 3 Garage Spaces | 5945 Total Sqft | 1990 Year Built



**cbshome**  
 A BERKSHIRE HATHAWAY AFFILIATE

Luxurious one-of-a-kind masterpiece in highly sought after Barrington Park. 5BR, 5BA impeccably designed 2-story w/stunning renovation throughout every sq inch. Includes breath taking 2-story entry, white woodwork, crown molding, plantation shutters, nickel hardware, new paint & stunning updated light fixtures throughout. Exquisite white chef's kitchen spa like marble master bathroom and 21x12 custom master closet. Entertainers dream walkout basement w/wet bar, rec room, game room and more!

### Features & Amenities

<b>County</b>	Douglas County	<b>Bedrooms</b>	5	<b>MLS#</b>	21814316
<b>Subdivision</b>	Barrington Park	<b>Bathrooms</b>	5	<b>Status</b>	ACTIVE
<b>Living Room Size</b>	24x15	<b># of Rooms</b>	20	<b>Tax Amount</b>	\$14,990
<b>Dining Room size</b>	14x12	<b># of Fireplaces</b>	5	<b>Tax Year</b>	\$2,017
<b>Kitchen Size</b>	21x13	<b>Garage Spaces</b>	3	<b>Year Built</b>	1990
<b>Master Bedroom Size</b>	16x16	<b>3rd Floor SqFt</b>	0	<b>Walk-Out</b>	Yes
<b>Bedroom #2 Size</b>	12x15	<b>2nd Floor SqFt</b>	1801	<b>Basement</b>	
<b>Bedroom #3 Size</b>	11x13	<b>Main Floor SqFt</b>	2188	<b>Grade School</b>	Aldrich
<b>Bedroom #4 Size</b>	16x14	<b>Total Finished</b>	5945	<b>Jr.High School</b>	Kiewit
<b>Family Room Size</b>	20x18	<b>SqFt</b>		<b>High School</b>	Millard North
<b>Other Room 1 Size</b>	15x13	<b>Finished Below</b>	1956		
		<b>Grade</b>			
		<b>Lot Dimensions</b>	145x126		

Information has not been verified, is not guaranteed and is Copyright (c) 2018 CBSHOME