

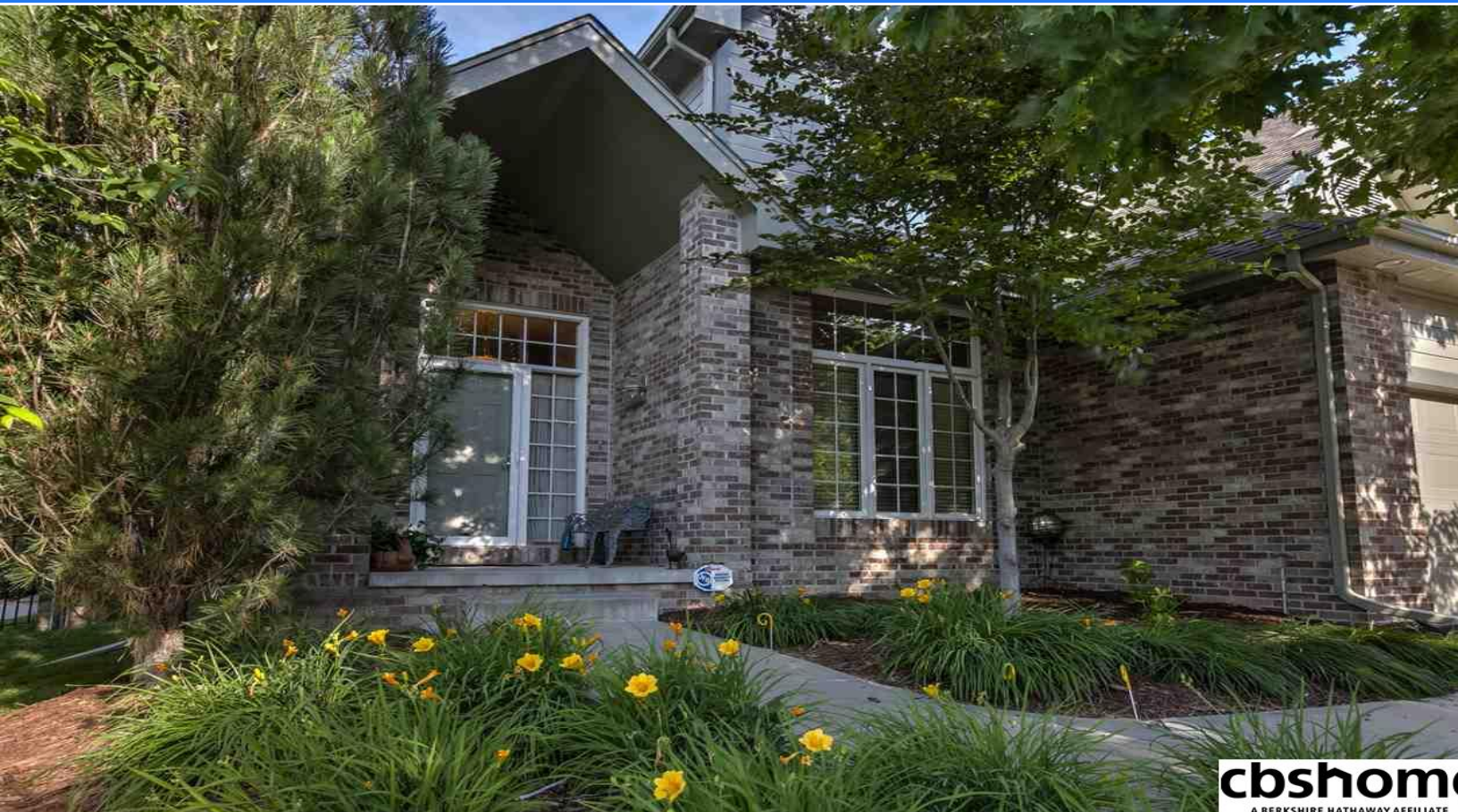
2232 S 89 Court

\$399,900



Jason Birnstihl
 CBSHOME
 jason.birnstihl@cbshome.com
 402-669-0415

MLS # 21811754 | 4 Bedrooms | 4 Bathrooms | 3 Garage Spaces | 3189 Total Sqft | 2004 Year Built



District 66 gem in PRIME, gated location! Kitchen features stainless, granite, hardwood & opens to grand living room w/ fireplace. Deluxe master suite on main floor (features vaulted ceiling, whirlpool tub, walk-in closet) walks out to fully landscaped, gorgeous backyard. 3 spacious bedrooms up, ALL w/ walk-in closets. Finished lower features massive main rec room, bathroom & 5th non-conforming bedroom. Worry free w/ low monthly fee covers lawn, snow & common area feature maintenance.

Features & Amenities

County	Douglas County	Bedrooms	4	MLS#	21811754
Subdivision	Arbor Sanctuary	Bathrooms	4	Status	NEW
Living Room Size	19 x 13.8	# of Rooms	10	Tax Amount	\$6,901
Dining Room size	14 x 10.10	# of Fireplaces	1	Tax Year	\$2,017
Kitchen Size	20 x 12	Garage Spaces	3	Year Built	2004
Master Bedroom Size	14 x 14	3rd Floor SqFt	0	Walk-Out	No
Bedroom #2 Size	14 x 11	2nd Floor SqFt	947	Basement	
Bedroom #3 Size	15 x 11	Main Floor SqFt	1372	Grade School	Loveland
Bedroom #4 Size	14 x 12	Total Finished SqFt	3189	Jr.High School	Westside
Family Room Size		SqFt		High School	Westside
Other Room 1 Size	20 x 10	Finished Below Grade	870		
		Lot Dimensions	113 x 65 100 x 23.02 x 46		

Information has not been verified, is not guaranteed and is Copyright (c) 2018 CBSHOME