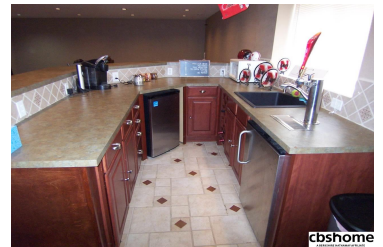
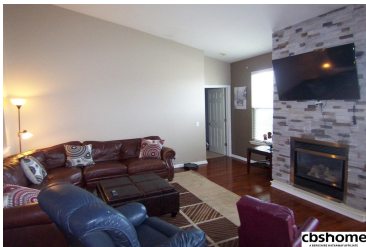




MLS # 21811722 | 3 Bedrooms | 2 Bathrooms | 2 Garage Spaces | 2327 Total Sqft | 2004 Year Built



Remarks

Walk out ranch in popular neighborhood, granite counters, SS appliances, sprinklers, large deck, new walk-in shower, stack stove fireplace, ceramic backsplash, newer roof, AC, double sinks in master, new Pella sliding glass doors main and basement. Commercial like bar in basement.



Dan Spence
CBSHOME
Dan.Spence@cbshome.com
402-697-4530

Information has not been verified, is not guaranteed and is Copyright (c) 2018 CBSHOME