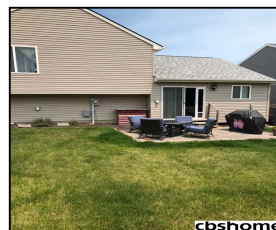
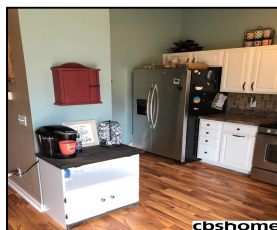
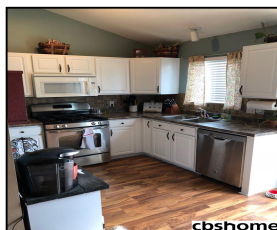


14461 Jardine Street

\$185,000



**cbshome**  
A BERKSHIRE HATHAWAY AFFILIATE



## Remarks

Beautiful Tri-Level in sought after Bennington School Dist. 3 Bedrooms, 2 Baths, Hardwood floors, Fully fenced yard, Sprinkler System, Finished Basement. Newer Stainless Steel Appliances, Well-kept home in Ridgemoor Subdivision. Ready for you to move into.

## Features & Amenities

<b>County</b>	Douglas County	<b>Bedrooms</b>	3	<b>MLS#</b>	21811717
<b>Subdivision</b>	Ridgemoor	<b>Bathrooms</b>	2	<b>Status</b>	NEW
<b>Living Room Size</b>	16.2x14.10	<b># of Rooms</b>	9	<b>Tax Amount</b>	\$4,056
<b>Dining Room size</b>		<b># of Fireplaces</b>	1	<b>Tax Year</b>	\$2,017
<b>Kitchen Size</b>	16.3x11.11	<b>Garage Spaces</b>	2	<b>Year Built</b>	2009
<b>Master Bedroom Size</b>	11.9x11.6	<b>3rd Floor SqFt</b>	0	<b>Walk-Out</b>	No
<b>Bedroom #2 Size</b>	10.3x10.2	<b>2nd Floor SqFt</b>	588	<b>Basement</b>	
<b>Bedroom #3 Size</b>	9.11x10.3	<b>Main Floor SqFt</b>	749	<b>Grade School</b>	Pine Creek
<b>Bedroom #4 Size</b>		<b>Total Finished SqFt</b>	1537	<b>Jr.High School</b>	Bennington
<b>Family Room Size</b>	17.10x12.7	<b>Finished Below Grade</b>	200	<b>High School</b>	Bennington
<b>Other Room 1 Size</b>		<b>Lot Dimensions</b>	52x100		



**Brent Blythe**  
CBSHOME  
Brent.Blythe@cbshome.com  
402-676-5081



**Lesla Blythe**  
CBSHOME  
Lesla.Blythe@cbshome.com  
402-598-3633

Information has not been verified, is not guaranteed and is Copyright (c) 2018 CBSHOME