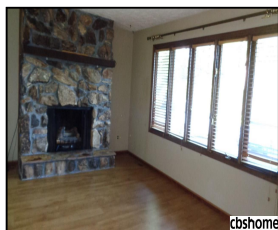




cbsHOME
A BERKSHIRE HATHAWAY AFFILIATE



cbsHOME



cbsHOME



cbsHOME



cbsHOME



cbsHOME

Remarks

Nice big Ranch on over 1/2 acre. Very private setting. Backs to fields. 3 large bedrooms & cozy hearthroom. Big country eat-in kitchen, appliances included. Mstr bed has 1/2 Bath. Finished lower level w/family room, den & storage. 3/4 bathroom has been started, needs completed. MFU. Wood burner is connected to furnace for low bills. Over 1/2 acre level yard. Plenty of room to build Big Shop. Rear deck & storage shed. Home is an Estate. New gutters & downspout. Lot to the east included.

Features & Amenities

County	Douglas County	Bedrooms	3	MLS#	21811566
Subdivision	Murray	Bathrooms	3	Status	PENDING
Living Room Size	21.7x11.7	# of Rooms	9	Tax Amount	\$2,499
Dining Room size	13.10x12.7	# of Fireplaces	1	Tax Year	\$2,017
Kitchen Size	8.5x13	Garage Spaces	2	Year Built	1973
Master Bedroom Size	11.5x12.8	3rd Floor SqFt	0	Walk-Out	No
Bedroom #2 Size	10.3x13.10	2nd Floor SqFt	0	Basement	
Bedroom #3 Size	10.3x12.4	Main Floor SqFt	1332	Grade School	Conestoga
Bedroom #4 Size		Total Finished	2322	Jr.High School	Conestoga
Family Room Size	25.7x30.5	SqFt		High School	Conestoga
Other Room 1 Size	11x13	Finished Below	990		
		Grade			
		Lot Dimensions	132x190		



Patty Scarlett

CBSHOME

Patricia.Scarlett@cbsHOME.com

402-679-8595

Information has not been verified, is not guaranteed and is Copyright (c) 2018 CBSHOME