



MLS # 21811532 | 4 Bedrooms | 3 Bathrooms | 2 Garage Spaces | 2107 Total Sqft | 2005 Year Built

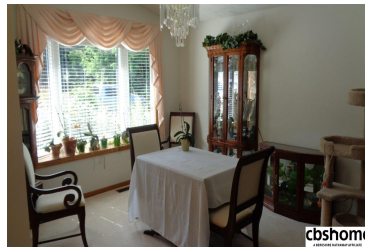
m
AFFILIATE



cbshome



cbshome



cbshome



cbshome

Remarks

Spacious 4 BR 3 BA 2 car townhome. Priced to sell! Original owners. Zero entry in garage & front door. Lg living rm & formal dine space. French door open to private patio. Watch the deer, turkeys & birds. Cool kitchen & eat-in dine area. Island, pantry, all appls incl, ceramic tile backsplash. Mst ste w/walk in shower & closet. Each BR is BIG! Finished walkout lower level w/2 BIG beds, 3/4 BA, family rm & BIG storage/utility. \$50/mo HOA for snow & lawn care. 10 min S of Bellevue. Bright & open.



Patty Scarlett

CBSHOME

Patricia.Scarlett@cbshome.coi

402-679-8595

Information has not been verified, is not guaranteed and is Copyright (c) 2018 CBSHOME