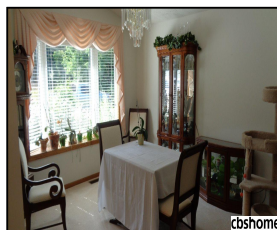
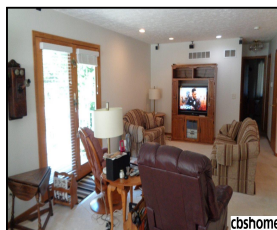


131 W Deer Lane

\$189,500



Remarks

Spacious 4 BR 3 BA 2 car townhome. Priced to sell! Original owners. Zero entry in garage & front door. Lg living rm & formal dine space. French door open to private patio. Watch the deer, turkeys & birds. Cool kitchen & eat-in dine area. Island, pantry, all appls incl, ceramic tile backsplash. Mst ste w/walk in shower & closet. Each BR is BIG! Finished walkout lower level w/2 BIG beds, 3/4 BA, family rm & BIG storage/utility. \$50/mo HOA for snow & lawn care. 10 min S of Bellevue. Bright & open.

Features & Amenities

County	Douglas County	Bedrooms	4	MLS#	21811532
Subdivision	Deer Crossing	Bathrooms	3	Status	NEW
Living Room Size	35x15.5	# of Rooms	9	Tax Amount	\$1,861
Dining Room size		# of Fireplaces	0	Tax Year	\$2,017
Kitchen Size	18x13.9	Garage Spaces	2	Year Built	2005
Master Bedroom Size	12.4x17.6	3rd Floor SqFt	0	Walk-Out	Yes
Bedroom #2 Size	9.9x15	2nd Floor SqFt	0	Basement	
Bedroom #3 Size	14.8x17	Main Floor SqFt	1407	Grade School	Plattsmouth
Bedroom #4 Size	14.4x13.9	Total Finished	2107	Jr.High School	Plattsmouth
Family Room Size	14x25.3	SqFt		High School	Plattsmouth
Other Room 1 Size	11.8x14	Finished Below	700		
		Grade			
		Lot Dimensions	47x101.91		



Patty Scarlett
 CBSHOME
 Patricia.Scarlett@cbshome.com
 402-679-8595

Information has not been verified, is not guaranteed and is Copyright (c) 2018 CBSHOME