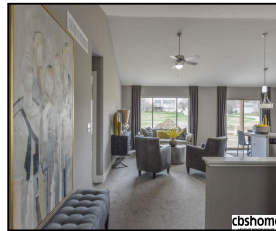
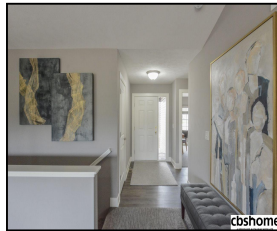


2651 N 202 Avenue

\$235,350



## Remarks

Introducing our newest model in THE VILLAS OF PINEY CREEK by OMAHA EASY LIVING located off 202nd and Blondo Pkwy. GRANITE counter tops throughout, ALL APPLIANCES including Refrigerator, Washer/Dryer. Huge PANTRY. PICK YOUR PALLETTE allows CHOICE of DESIGNER FINISHES at no extra charge. Zero Entry Lot's Available. Basement finish optional and not included in price or sq footage. HOA fees approximate. Agent has equity. Pics are of Model home at 20176 Miami Circle.

## Features & Amenities

<b>County</b>	Douglas County	<b>Bedrooms</b>	2	<b>MLS#</b>	21810344
<b>Subdivision</b>	Piney Creek	<b>Bathrooms</b>	2	<b>Status</b>	ACTIVE
<b>Living Room Size</b>	13.6x20.8	<b># of Rooms</b>	5	<b>Tax Amount</b>	\$274
<b>Dining Room size</b>	11.6x9.8	<b># of Fireplaces</b>	0	<b>Tax Year</b>	\$2,017
<b>Kitchen Size</b>	11.8x9	<b>Garage Spaces</b>	2	<b>Year Built</b>	2018
<b>Master Bedroom Size</b>	12x13	<b>3rd Floor SqFt</b>	0	<b>Walk-Out</b>	No
<b>Bedroom #2 Size</b>	12x10	<b>2nd Floor SqFt</b>	0	<b>Basement</b>	
<b>Bedroom #3 Size</b>		<b>Main Floor SqFt</b>	1250	<b>Grade School</b>	Westridge
<b>Bedroom #4 Size</b>		<b>Total Finished SqFt</b>	1250	<b>Jr.High School</b>	Elkhorn
<b>Family Room Size</b>		<b>Finished Below Grade</b>	0	<b>High School</b>	Elkhorn
<b>Other Room 1 Size</b>		<b>Lot Dimensions</b>	0.14 Acre		



**Terri Krasne**  
 CBSHOME  
 Terri.Krasne@cbshome.com  
 402-690-5282

Information has not been verified, is not guaranteed and is Copyright (c) 2018 CBSHOME