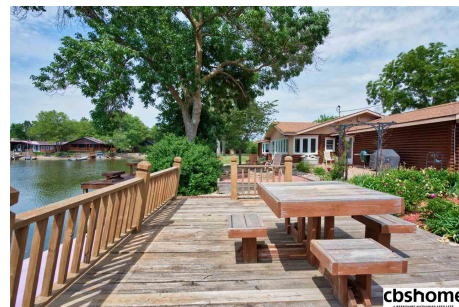
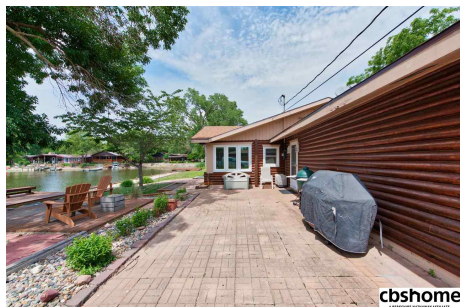


3222 N 265th Plaza

\$399,900



MLS # 21810328 | 3 Bedrooms | 2 Bathrooms

2 Garage Spaces | 1980 Total Sqft | 1972 Year Built

Welcome to Timber Lodge Lake. This log cabin features: 3BR, 2BA, oversized 2 car garage. Newer roof, furnace and a/c. New seawall, firepit, mature trees, brick paver patio, updated decking and all new windows. Skylight, oversized kitchen with large solid surface peninsula. Vaulted ceilings, fireplace and updated baths. Enjoy the serenity of this beautiful lake. Welcome Home!



Ralph Marasco
CBSHOME
Ralph.Marasco@cbshome.com
402-697-4272

Information has not been verified, is not guaranteed and is Copyright (c) 2018 CBSHOME