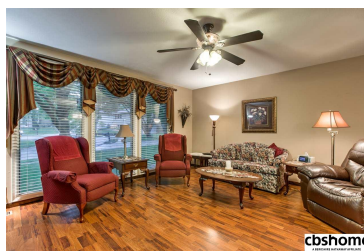




MLS # 21810312 | 3 Bedrooms | 3 Bathrooms | 2 Garage Spaces | 1896 Total Sqft | 1978 Year Built

m
AFFILIATE



Remarks

This spacious tri-level is nestled in the heart of Rambleridge on a quiet cul-de-sac. Huge deck overlooks professionally landscaped yard, backs up to common area with parklike setting. Gorgeous dark wood laminate flooring throughout living room & dining room. Fresh paint with newer counters & vinyl flooring in kitchen. Maintenance free siding with NEW roof, gutters & downspouts. SAVE on closing costs - 2nd 1/2 taxes are EXEMPT!!



Linda Carpenter
CBSHOME
linda.carpenter@cbshome.com
402-680-7032

Information has not been verified, is not guaranteed and is Copyright (c) 2018 CBSHOME