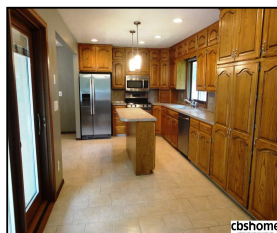
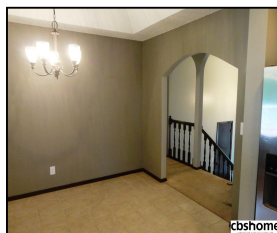
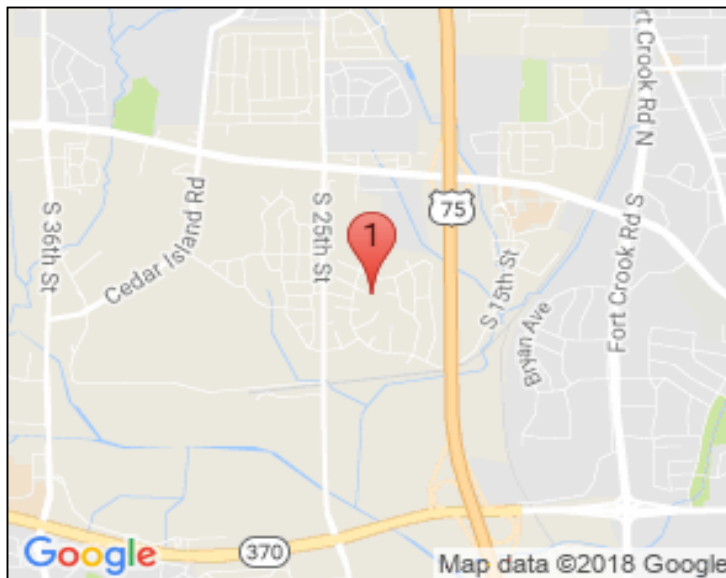


2302 Arlington Place

\$209,000



Remarks

This large split entry offers over 2400sq ft of living space, with a great location & backing to trail! 4 bed, 3 bth, 2 car. Updated baths & large kit with center isle, tons of cabinets, & SS appliances. Large fam rm w woodburning stove & access to partially covered grand composite deck overlooking fenced walkout backyd. The lower level includes a nice recrm w fireplace & rough-in for a wet bar, the 4th BR, bath, along with a surprise workroom walking out to back. Newer HVAC, radon sys, roof.

Features & Amenities

County	Douglas County	Bedrooms	4	MLS#	21810208
Subdivision	Willow Springs-t	Bathrooms	3	Status	ACTIVE
	Town	# of Rooms	9	Tax Amount	\$3,679
Living Room Size	17.3x14.6	# of Fireplaces	2	Tax Year	\$2,017
Dining Room size	12.6x9.6	Garage Spaces	2	Year Built	1976
Kitchen Size	20x10	3rd Floor SqFt	0	Walk-Out	Yes
Master Bedroom Size	14.6x13.4	2nd Floor SqFt	0	Basement	
Bedroom #2 Size	14.3x9.9	Main Floor SqFt	1673	Grade School	Birchcrest
Bedroom #3 Size	10.9x10.6	Total Finished	2415	Jr.High School	Logan Fontenelle
Bedroom #4 Size	11x9.2	SqFt		High School	Bellevue West
Family Room Size	17.6x15	Finished Below	742		
Other Room 1 Size	17.6x15	Grade			
		Lot Dimensions	60x105		



Scott and Leann Yahnke

CBSHOME
Yahnkes@cbshome.com
402-690-6100



Scott Yahnke

CBSHOME
scott.yahnke@cbshome.com
402-657-3333

Information has not been verified, is not guaranteed and is Copyright (c) 2018 CBSHOME