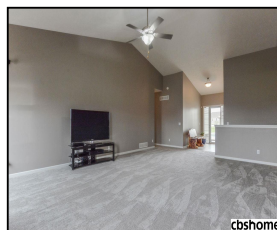
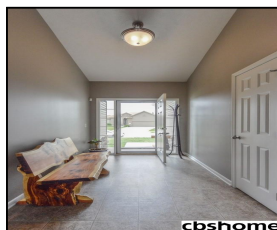
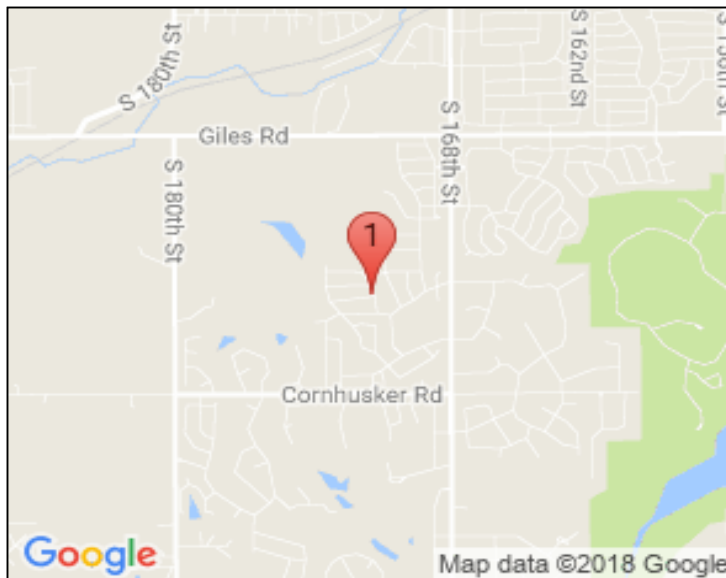


17202 Banner Street

\$268,000



## Remarks

Spacious 3BR/2BA/2 car walk-out ranch in popular Palisades! Brand new carpet & paint thru-out! Lg kit. w/42" cabs, pantry, lg brkfst bar, & SS appls (all included)! Open & airy liv. rm w/vaulted ceiling, gas FP w/granite surround. Lg master w/huge walk-in closet, ensuite w/dbl sinks, soaker tub & separate shower. Mn flr laundry, washer & dryer included! Massive LL w/rough in bath ready to be finished. Vinyl siding, roof in '17, extended deck, full wood privacy fence & corner lot. Gretna schools!

## Features & Amenities

<b>County</b>	Douglas County	<b>Bedrooms</b>	3	<b>MLS#</b>	21807260
<b>Subdivision</b>	Palisades	<b>Bathrooms</b>	2	<b>Status</b>	NEW
<b>Living Room Size</b>	23.3x16.5	<b># of Rooms</b>	10	<b>Tax Amount</b>	\$5,481
<b>Dining Room size</b>	13x10.5	<b># of Fireplaces</b>	1	<b>Tax Year</b>	2017
<b>Kitchen Size</b>	13x10.9	<b>Garage Spaces</b>	2	<b>Year Built</b>	2009
<b>Master Bedroom Size</b>	15.4x12.6	<b>3rd Floor SqFt</b>	0	<b>Walk-Out</b>	Yes
<b>Bedroom #2 Size</b>	12.1x9.6	<b>2nd Floor SqFt</b>	0	<b>Basement</b>	
<b>Bedroom #3 Size</b>	10.8x9.7	<b>Main Floor SqFt</b>	1770	<b>Grade School</b>	Palisades
<b>Bedroom #4 Size</b>		<b>Total Finished SqFt</b>	1770	<b>Jr.High School</b>	Aspen Creek
<b>Family Room Size</b>		<b>Finished Below Grade</b>	0	<b>High School</b>	Gretna
<b>Other Room 1 Size</b>		<b>Lot Dimensions</b>	53.0 x 110.3 x 72.4 x 118.0		

**Jeremy Murray**  
 CBSHOME  
 jeremy.murray@cbshome.com  
 402-290-0292



**Laura Putnam**  
 CBSHOME  
 Laura.Putnam@cbshome.com  
 402-740-3188

Information has not been verified, is not guaranteed and is Copyright (c) 2018 CBSHOME