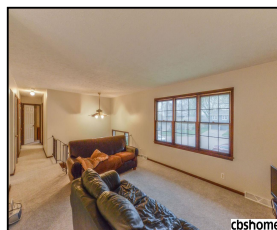
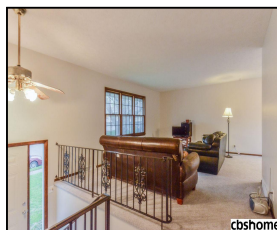
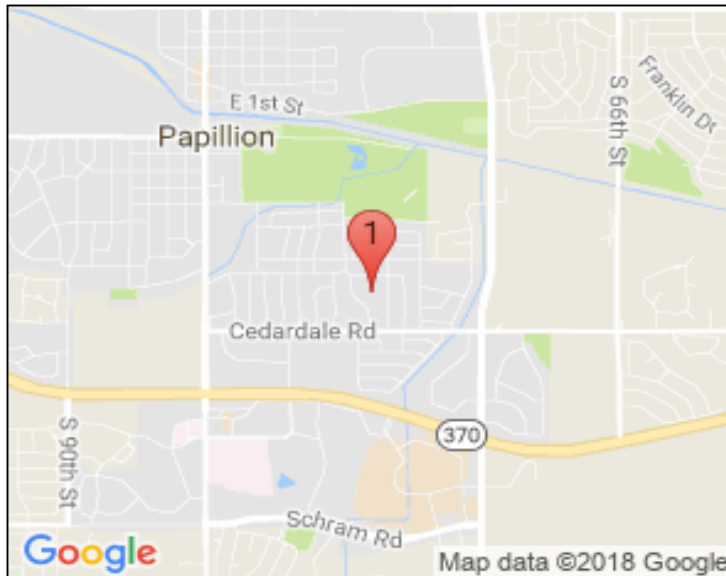


807 Richelieu Court

\$169,900



Remarks

Open House 05/06/18 1:00 to 3:00. So many updates in this Split Entry in popular Papillion neighborhood. New carpet, interior paint & doors 2018. New roof, gutters, downspouts & garage doors 2017. Furnace 2013 & AC 2012. Nice quiet cul-de-sac location. Cozy fireplace in Lower Level Family Room. Areas still needing updates: deck, bathrooms, driveway & landscaping. Priced accordingly.

Features & Amenities

County	Douglas County	Bedrooms	3	MLS#	21807236
Subdivision	Park Hills	Bathrooms	3	Status	NEW
Living Room Size	19x13	# of Rooms	7	Tax Amount	\$2,827
Dining Room size	12x10	# of Fireplaces	1	Tax Year	\$2,017
Kitchen Size	13.511.5	Garage Spaces	2	Year Built	1969
Master Bedroom Size	14x11.6	3rd Floor SqFt	0	Walk-Out	No
Bedroom #2 Size	13x11	2nd Floor SqFt	0	Basement	
Bedroom #3 Size	12x10	Main Floor SqFt	1350	Grade School	Carriage Hill
Bedroom #4 Size		Total Finished	1690	Jr.High School	Papillion
Family Room Size	19x13	SqFt		High School	Papillion-La Vista South
Other Room 1 Size		Finished Below Grade	340		
		Lot Dimensions	93115x109x118		



Joe Gehrki
 CBSHOME
 Joe.Gehrki@cbshome.com
 402-934-1590



Karen Gehrki
 CBSHOME
 karen.gehrki@cbshome.com
 402-541-4832

Information has not been verified, is not guaranteed and is Copyright (c) 2018 CBSHOME