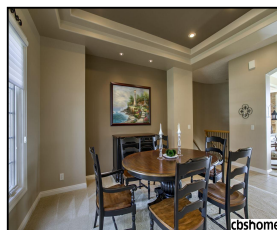
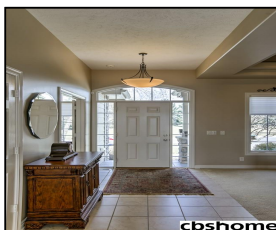
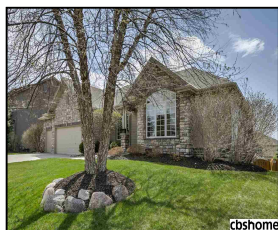


912 S 180 Avenue

\$515,000



## Remarks

Absolutely Stunning Ranch! Meticulous! Beautiful Great Rm Huge Windows! Kit w/Birch Cabinets, Wood Flr, Granite Counters, Large Breakfast Bar, Walks Out To Spacious Deck! Kitchen Overlooks The Hearth Rm w/Stone Fireplace & Built Ins! Extra Touch Is The Powder Rm! Main Flr Br Has A ¾ Bath! Master Br w/Awesome Master Bath w/French Drs, Whirlpool & Double Sinks! Game Day In A Wonderfully Fin WKO LL w/Wet Bar, Yet Another Stone Decorated Gas Fireplace, 2 Br's and ¾ Bth! Gorgeous Landscaped Yrd!

## Features & Amenities

<b>County</b>	Douglas County	<b>Bedrooms</b>	4	<b>MLS#</b>	21807207
<b>Subdivision</b>	Pacific Ridge	<b>Bathrooms</b>	4	<b>Status</b>	NEW
<b>Living Room Size</b>	18.9x16.05	<b># of Rooms</b>	9	<b>Tax Amount</b>	\$9,162
<b>Dining Room size</b>	14.06x10.04	<b># of Fireplaces</b>	2	<b>Tax Year</b>	\$2,017
<b>Kitchen Size</b>	20.04x15.07	<b>Garage Spaces</b>	3	<b>Year Built</b>	2005
<b>Master Bedroom Size</b>	16.01x15.02	<b>3rd Floor SqFt</b>	0	<b>Walk-Out</b>	Yes
<b>Bedroom #2 Size</b>	13.01x11.03	<b>2nd Floor SqFt</b>	0	<b>Basement</b>	
<b>Bedroom #3 Size</b>	15.07x14.07	<b>Main Floor SqFt</b>	2386	<b>Grade School</b>	Spring Ridge
<b>Bedroom #4 Size</b>	14.01x13.05	<b>Total Finished SqFt</b>	3836	<b>Jr.High School</b>	Elkhorn Ridge
<b>Family Room Size</b>	22.11x15.07	<b>Finished Below Grade</b>	1450	<b>High School</b>	Elkhorn South
<b>Other Room 1 Size</b>	18.08x13.01	<b>Lot Dimensions</b>	80.39x165.83x75.02x6.21x132.90		



**Georgie Vint**  
 CBSHOME  
 Georgie.Vint@cbshome.com  
 402-690-1578

Information has not been verified, is not guaranteed and is Copyright (c) 2018 CBSHOME