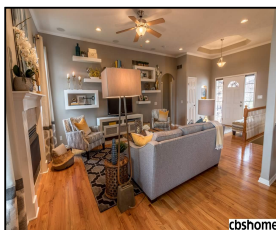
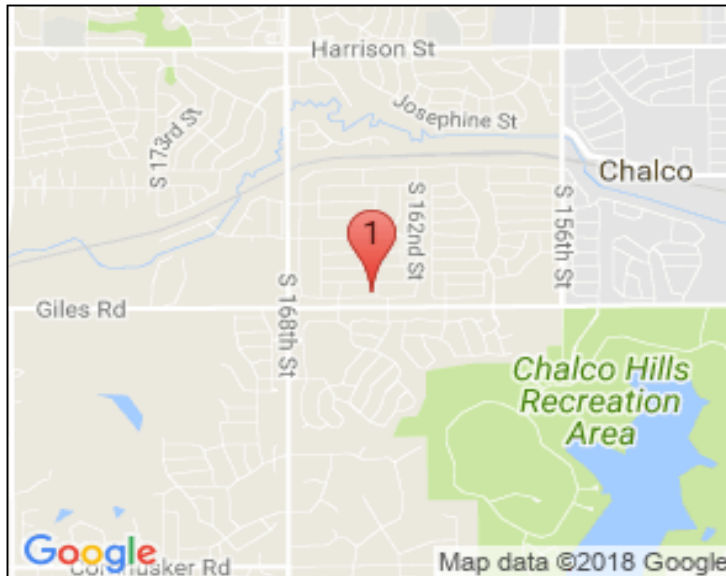


16418 Heather Street

\$310,000



## Remarks

Honey, pull the car over now!!! This is one of my all time favorite homes! GORGEOUS!!! Fabulous finishes, spacious rooms, awesome lower level recently, professionally finished! You'll want to call it home the minute you walk in the front door. Great location for amenities. A MUST SEE AND I'M NOT KIDDING!!!! Enjoy now as it won't last long!

## Features & Amenities

<b>County</b>	Douglas County	<b>Bedrooms</b>	4	<b>MLS#</b>	21807169
<b>Subdivision</b>	Millard Park South	<b>Bathrooms</b>	3	<b>Status</b>	PENDING
<b>Living Room Size</b>	14.1x20.2	<b># of Rooms</b>	7	<b>Tax Amount</b>	\$5,327
<b>Dining Room size</b>		<b># of Fireplaces</b>	1	<b>Tax Year</b>	\$2,017
<b>Kitchen Size</b>	19.9x12.5	<b>Garage Spaces</b>	3	<b>Year Built</b>	2005
<b>Master Bedroom Size</b>	14.1x12.1	<b>3rd Floor SqFt</b>	0	<b>Walk-Out</b>	Yes
<b>Bedroom #2 Size</b>	12.6x11.4	<b>2nd Floor SqFt</b>	0	<b>Basement</b>	
<b>Bedroom #3 Size</b>	11.8x11.1	<b>Main Floor SqFt</b>	1526	<b>Grade School</b>	Upchurch
<b>Bedroom #4 Size</b>	11.7x12.5	<b>Total Finished</b>	2627	<b>Jr.High School</b>	Harry Andersen
<b>Family Room Size</b>	22.2x38.1	<b>SqFt</b>		<b>High School</b>	Millard South
<b>Other Room 1 Size</b>		<b>Finished Below</b>	1101		
		<b>Grade</b>			
		<b>Lot Dimensions</b>	132.5x71		



**Julie Tartaglia**

CBSHOME

Julie.Tartaglia@cbshome.com

402-215-2156

Information has not been verified, is not guaranteed and is Copyright (c) 2018 CBSHOME