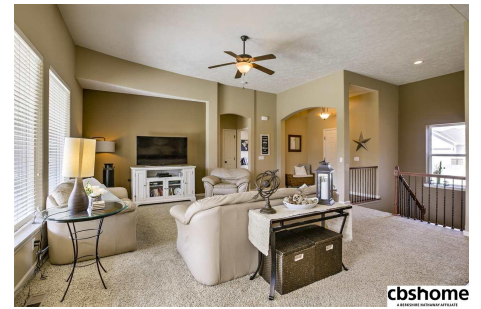
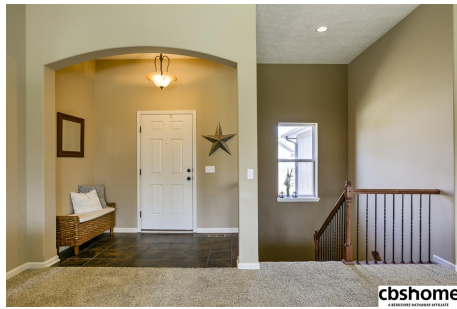


4205 Victoria Avenue

\$317,000



MLS # 21807106 | 3 Bedrooms | 3 Bathrooms

3 Garage Spaces | 2924 Total Sqft | 2012 Year Built

Sensational Ranch backs to Green Space & Park in Ashford Hollow! Open & Inviting w/10ft ceilings, lrg windows & split bdrm plan. Kitchen features New Luxury Vinyl (2018), birch cabinets, granite counters, SS appli & XL W-I pantry. MSTR features whirlpool tub, dbl sinks, tile flr & W-I closet. Fully finished LL has huge Family Rm w/built-in entertainment area, 3 daylight windows & 3/4 Bath. Beautifully landscaped, enlarged back patio, sprinklers & direct access to park from your backyard.



Karen Jennings

CBSHOME

Karen.Jennings@cbshome.cor

402-290-6296

Information has not been verified, is not guaranteed and is Copyright (c) 2018 CBSHOME