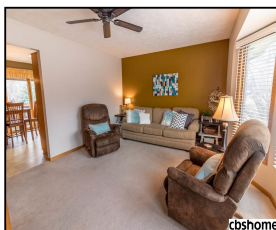
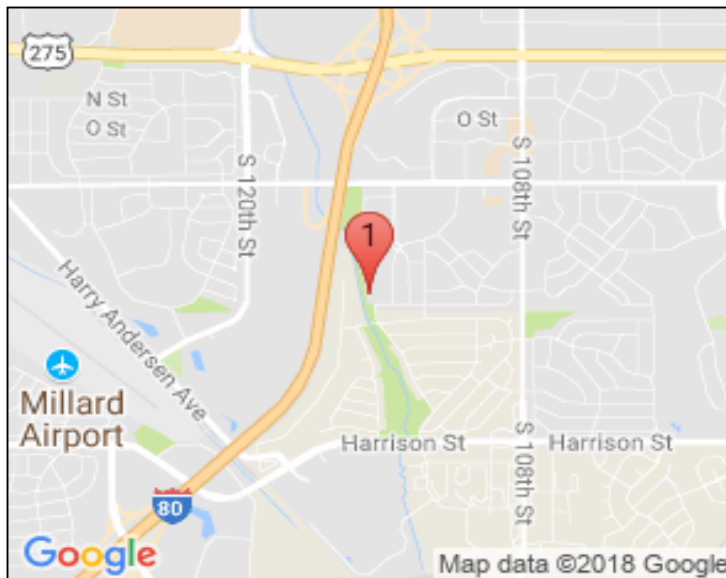


5854 S 115 Circle

\$200,000



## Remarks

Welcome Home! Fully fenced backyard with no neighbors backing to walking trail with nice custom brick patio. 2017 new exterior paint, newly professionally landscaped & new basement carpet. Just waiting for you! All measurements approximate.

## Features & Amenities

<b>County</b>	Douglas County	<b>Bedrooms</b>	4	<b>MLS#</b>	21805818
<b>Subdivision</b>	Roxbury West	<b>Bathrooms</b>	3	<b>Status</b>	PENDING
<b>Living Room Size</b>	12.20x18.80	<b># of Rooms</b>	6	<b>Tax Amount</b>	\$3,223
<b>Dining Room size</b>		<b># of Fireplaces</b>	0	<b>Tax Year</b>	\$2,017
<b>Kitchen Size</b>	12.60x14.90	<b>Garage Spaces</b>	2	<b>Year Built</b>	1993
<b>Master Bedroom Size</b>	11.30x12.50	<b>3rd Floor SqFt</b>	0	<b>Walk-Out</b>	No
<b>Bedroom #2 Size</b>	10.70x11.0	<b>2nd Floor SqFt</b>	0	<b>Basement</b>	
<b>Bedroom #3 Size</b>	10.70x11.40	<b>Main Floor SqFt</b>	1370	<b>Grade School</b>	Walt Disney
<b>Bedroom #4 Size</b>	9.30x10.2	<b>Total Finished SqFt</b>	1660	<b>Jr.High School</b>	Millard Central
<b>Family Room Size</b>		<b>Finished Below Grade</b>	290	<b>High School</b>	Millard South
<b>Other Room 1 Size</b>		<b>Lot Dimensions</b>	53x95		



**Lisa Haffner**  
 CBSHOME  
 lisa.haffner@cbshome.com  
 402-250-0864



**Julie Tartaglia**  
 CBSHOME  
 Julie.Tartaglia@cbshome.com  
 402-215-2156

Information has not been verified, is not guaranteed and is Copyright (c) 2018 CBSHOME