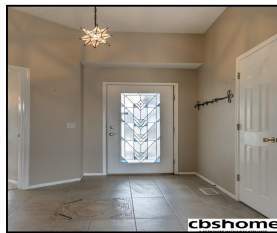


2916 N 153rd Circle

\$235,000



## Remarks

Spacious Walkout Ranch on Cul-de-sac! Living Rm has vaulted ceiling, fireplace & large windows. Kitchen has white cabinets, granite counters w/glass tile splash, white appli, wd laminate flrs & eat-in area that leads to deck. Master Suite has vaulted ceiling, W-I closet & bath w/dual vanity, whirlpool tub & shower. Finished WKO LL has Rec Rm, BdRM 3, ¾ Bath, Bonus Rm w/French doors & Storage Rm. Large, fully fenced bkyd has above-ground pool, mature landscaping & fountains. AMA

## Features & Amenities

<b>County</b>	Douglas County	<b>Bedrooms</b>	3	<b>MLS#</b>	21805804
<b>Subdivision</b>	Seven Pines	<b>Bathrooms</b>	3	<b>Status</b>	PENDING
<b>Living Room Size</b>	19x14	<b># of Rooms</b>	8	<b>Tax Amount</b>	\$4,028
<b>Dining Room size</b>		<b># of Fireplaces</b>	2	<b>Tax Year</b>	\$2,017
<b>Kitchen Size</b>	22x10.8	<b>Garage Spaces</b>	2	<b>Year Built</b>	1997
<b>Master Bedroom Size</b>	14x12	<b>3rd Floor SqFt</b>	0	<b>Walk-Out</b>	Yes
<b>Bedroom #2 Size</b>	14x12	<b>2nd Floor SqFt</b>	0	<b>Basement</b>	
<b>Bedroom #3 Size</b>	13.6x12	<b>Main Floor SqFt</b>	1328	<b>Grade School</b>	Picotte
<b>Bedroom #4 Size</b>		<b>Total Finished SqFt</b>	2428	<b>Jr.High School</b>	Buffett
<b>Family Room Size</b>		<b>Finished Below Grade</b>	1100	<b>High School</b>	Burke
<b>Other Room 1 Size</b>	12x10.6	<b>Lot Dimensions</b>	38.05x145.43x24.21x126.63x115.78		



**Karen Jennings**  
 CBSHOME  
 Karen.Jennings@cbshome.com  
 402-290-6296



**Missy Turner**  
 CBSHOME  
 missy.turner@cbshome.com  
 402-630-9346

Information has not been verified, is not guaranteed and is Copyright (c) 2018 CBSHOME