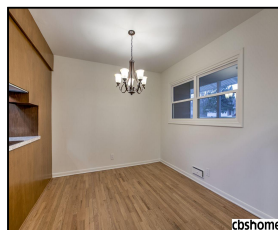
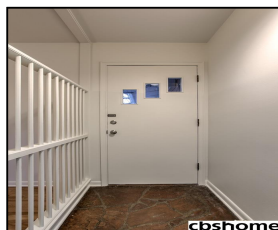
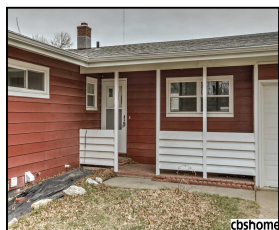
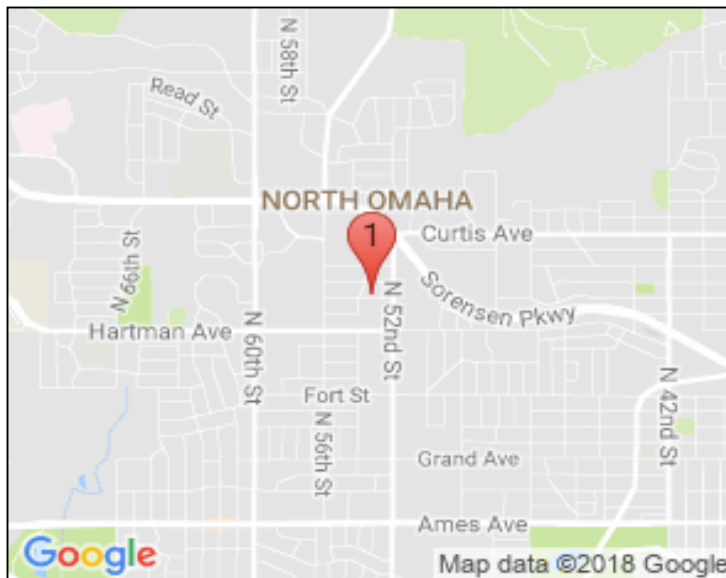


5236 Laurel Avenue

\$169,900



## Remarks

CONTRACT PENDING. DOUBLE LOT! South-facing, Move-in ready Ranch on over .6 Acres! Kitchen w/SS appliances, birch cabinets & laminate floors. Fresh Interior paint (2018), Large Vinyl windows & new wood burning fireplace insert (2018). Finished walkout basement w/new paint (2018) & Laminate wood flooring. LL also includes laundry & Modern 3/4 bathroom. New roof (2016), fenced backyard with 2 sheds & adjacent 2nd lot! New electrical panel (2018) & New garage door openers.

## Features & Amenities

<b>County</b>	Douglas County	<b>Bedrooms</b>	3	<b>MLS#</b>	21805800
<b>Subdivision</b>	Mount View Acres	<b>Bathrooms</b>	2	<b>Status</b>	PENDING
<b>Living Room Size</b>	10x12	<b># of Rooms</b>	6	<b>Tax Amount</b>	\$2,269
<b>Dining Room size</b>	8x17	<b># of Fireplaces</b>	1	<b>Tax Year</b>	\$2,017
<b>Kitchen Size</b>	10x14	<b>Garage Spaces</b>	2	<b>Year Built</b>	1953
<b>Master Bedroom Size</b>	10x10	<b>3rd Floor SqFt</b>	0	<b>Walk-Out</b>	Yes
<b>Bedroom #2 Size</b>	10x10	<b>2nd Floor SqFt</b>	0	<b>Basement</b>	
<b>Bedroom #3 Size</b>	10x10	<b>Main Floor SqFt</b>	1340	<b>Grade School</b>	Mount View
<b>Bedroom #4 Size</b>	19x15	<b>Total Finished</b>	1860	<b>Jr.High School</b>	Hale
<b>Family Room Size</b>		<b>SqFt</b>		<b>High School</b>	Benson
<b>Other Room 1 Size</b>		<b>Finished Below</b>	520		
		<b>Grade</b>			
		<b>Lot Dimensions</b>	102x138 (House .32 Acres), 1:		



**Karen Jennings**  
 CBSHOME  
 Karen.Jennings@cbshome.com  
 402-290-6296



**T.J. O'Leary**  
 CBSHOME  
 tj.oleary@cbshome.com  
 402-312-7657

Information has not been verified, is not guaranteed and is Copyright (c) 2018 CBSHOME