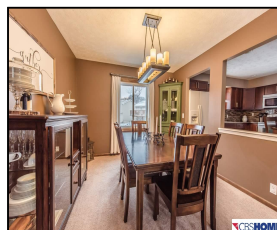
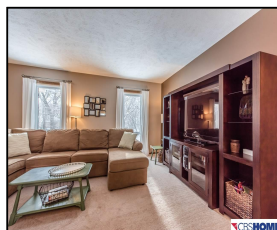
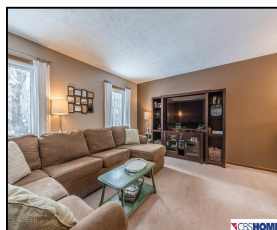
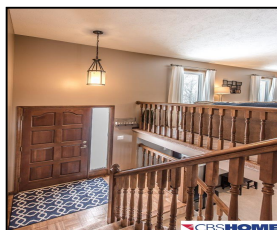
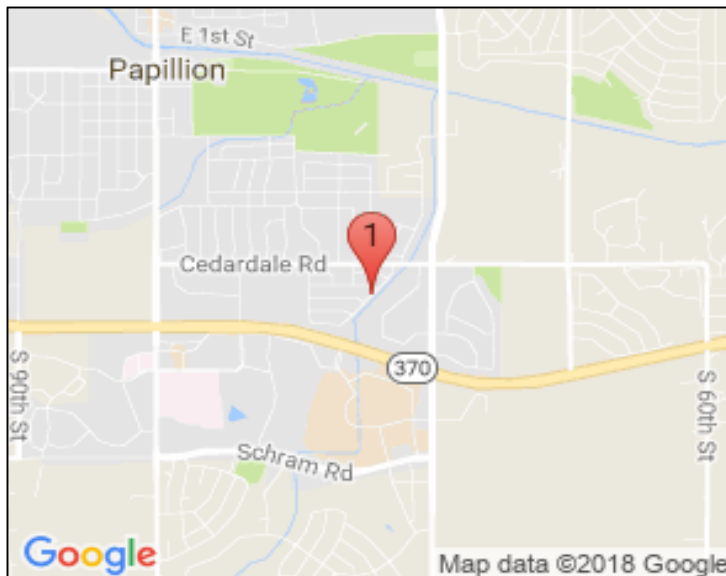


1218 Patricia Drive

\$200,000

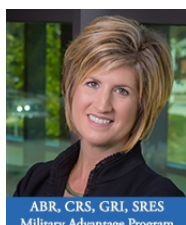


Remarks

Contract pending, backup offers only. What a Gem! Hurry in to tour this updated spacious split entry home! Nestled in Cedarwoods, just blocks from grade school, parks & trails, this home offers a ton of updates!! Updated kit. including new cabinets, quartz ctrtops, tile flr & backsplash. NEW roof, windows - 2017, garage doors 16', HVAC 11', water heater 13', vinyl siding. Surr sound pre-wire & cozy FP in finished LL incl. 1/2 BA. New paver patio in fenced yard, Xtra lrg 2 car garage w/ storage.

Features & Amenities

County	Douglas County	Bedrooms	3	MLS#	21801915
Subdivision	Cedar Woods	Bathrooms	3	Status	ACTIVE
Living Room Size	17x12	# of Rooms	8	Tax Amount	\$3,099
Dining Room size	13x11	# of Fireplaces	1	Tax Year	\$2,017
Kitchen Size	13x12.6	Garage Spaces	2	Year Built	1983
Master Bedroom Size	14.6x13.6	3rd Floor SqFt	0	Walk-Out	Yes
Bedroom #2 Size	11.9x10	2nd Floor SqFt	0	Basement	
Bedroom #3 Size	10.9x10.4	Main Floor SqFt	1342	Grade School	Carriage Hill
Bedroom #4 Size		Total Finished	1888	Jr.High School	Papillion
Family Room Size	25x17	SqFt		High School	Papillion-La Vista
Other Room 1 Size		Finished Below	546		South
		Grade			
		Lot Dimensions	70 x 105		



Leanne Sotak

CBSHOME

Leanne.Sotak@cbshome.com

402-210-5598

ABR, CRS, GRI, SRES
Military Advantage Program

Information has not been verified, is not guaranteed and is Copyright (c) 2018 CBSHOME