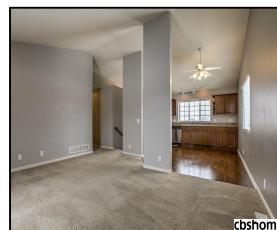
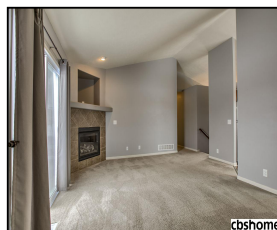
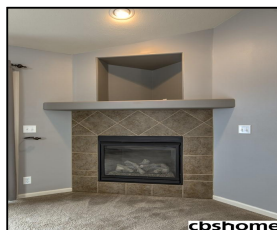
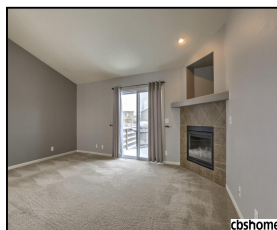
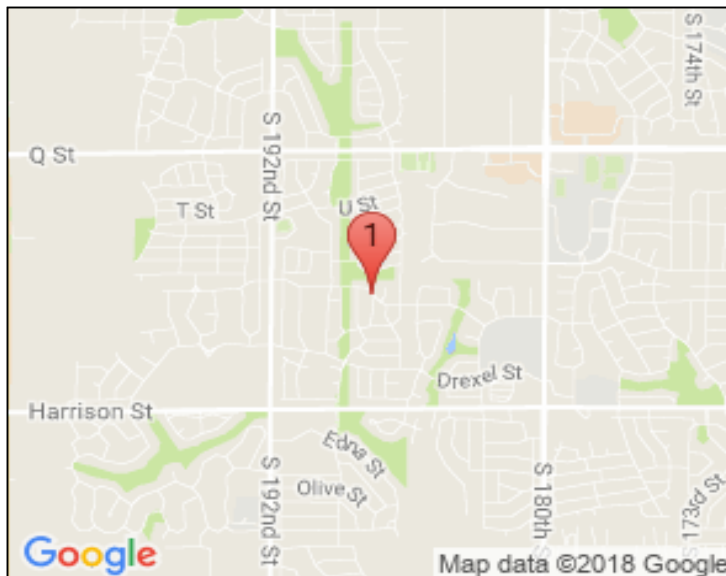


6004 S 188 Street

\$189,900



Remarks

Experience open living in desirable Harrison Park situated on a large, fenced-in corner lot. Sizable kitchen features vaulted ceilings, modern stainless appliances and plenty of eat-in space. Master bedroom includes en suite bath with double vanity and a walk-in closet. The home features a spacious basement and includes a sprinkler system. Pre-inspected. AMA.

Features & Amenities

County	Douglas County	Bedrooms	3	MLS#	21801789
Subdivision	Harrison Park	Bathrooms	2	Status	PENDING
Living Room Size	12.11x18.1	# of Rooms	7	Tax Amount	\$4,006
Dining Room size		# of Fireplaces	1	Tax Year	\$2,017
Kitchen Size	13.7x14	Garage Spaces	2	Year Built	2010
Master Bedroom Size	13.5x11.11	3rd Floor SqFt	0	Walk-Out	No
Bedroom #2 Size	13.5x9.11	2nd Floor SqFt	0	Basement	
Bedroom #3 Size	13.5x9.11	Main Floor SqFt	1282	Grade School	Reeder
Bedroom #4 Size		Total Finished	1662	Jr.High School	Beadle
Family Room Size	13x22.2	SqFt		High School	Millard West
Other Room 1 Size		Finished Below	380		
		Grade			
		Lot Dimensions	58x161x106x147		



Bill Nolan
 CBSHOME
 bill.nolan@cbshome.com
 402-850-4021



Corky Grimes
 CBSHOME
 Corky.Grimes@cbshome.com

Information has not been verified, is not guaranteed and is Copyright (c) 2018 CBSHOME