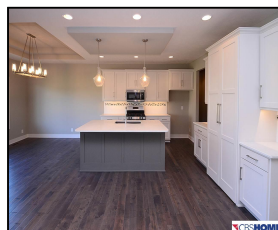
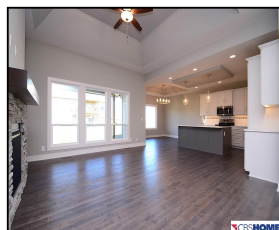
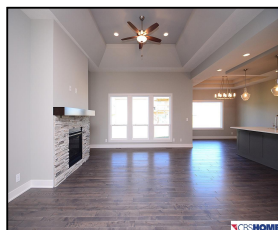
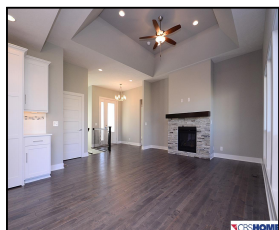
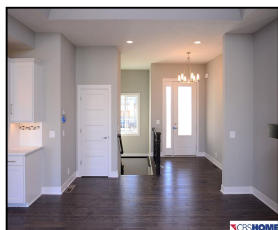


11704 S 110th Avenue

\$379,900



## Remarks

Brand NEW ranch plan that is versatile & practical! Same quality and craftsmanship you expect from Showcase Homes! Volume ceilings w/ceiling detail, white doors & trim & gray color palette. Private master bedroom tucked away from the main part of the home & other bedrooms. Gorgeous kitchen w/shaker cabinets, hidden walk-in pantry & quartz countertops. Awesome finished basement w/large rec area, full wetbar, 2 add'l beds, 3/4 bath & large storage room.

## Features & Amenities

<b>County</b>	Douglas County	<b>Bedrooms</b>	5	<b>MLS#</b>	21800066
<b>Subdivision</b>	Southbrook	<b>Bathrooms</b>	3	<b>Status</b>	PENDING
<b>Living Room Size</b>		<b># of Rooms</b>	12	<b>Tax Amount</b>	\$782
<b>Dining Room size</b>		<b># of Fireplaces</b>	1	<b>Tax Year</b>	\$2,017
<b>Kitchen Size</b>		<b>Garage Spaces</b>	3	<b>Year Built</b>	2017
<b>Master Bedroom Size</b>		<b>3rd Floor SqFt</b>	0	<b>Walk-Out</b>	No
<b>Bedroom #2 Size</b>		<b>2nd Floor SqFt</b>	0	<b>Basement</b>	
<b>Bedroom #3 Size</b>		<b>Main Floor SqFt</b>	1864	<b>Grade School</b>	Walnut Creek
<b>Bedroom #4 Size</b>		<b>Total Finished</b>	3193	<b>Jr.High School</b>	Papillion
<b>Family Room Size</b>		<b>SqFt</b>		<b>High School</b>	Papillion-La Vista
<b>Other Room 1 Size</b>		<b>Finished Below</b>	1329		South
		<b>Grade</b>			
		<b>Lot Dimensions</b>	76 x 12 x 121 x 85		
			x 130		



**April Williams**  
 CBSHOME  
 April.Williams@cbshome.com  
 402-301-3012

Information has not been verified, is not guaranteed and is Copyright (c) 2018 CBSHOME