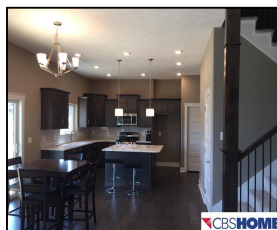


11019 Edgewater Drive

\$419,000



Remarks

Now ready! Model for sale, incredible walkout two story, corner lot, no back neighbors! Covered deck, beautifully carved out patio outside LL. Huge 4 car tandem garage! Large Kit and Pantry. Quartz tops everywhere! Andersen Windows. Convenient office on main floor. Equally convenient 2nd floor laundry. Certified High Performance Home will save you money on energy costs... more than you think! Full warranties in effect! Call today to find out more!

Features & Amenities

<b>County</b>	Douglas County	<b>Bedrooms</b>	4	<b>MLS#</b>	21800061
<b>Subdivision</b>	Southbrook	<b>Bathrooms</b>	3	<b>Status</b>	ACTIVE
<b>Living Room Size</b>	16.04 x 14.67	<b># of Rooms</b>	9	<b>Tax Amount</b>	\$1,222
<b>Dining Room size</b>	11.17 x 13.83	<b># of Fireplaces</b>	1	<b>Tax Year</b>	\$2,017
<b>Kitchen Size</b>	19.17 x 10.25	<b>Garage Spaces</b>	4	<b>Year Built</b>	2017
<b>Master Bedroom Size</b>	13.17 x 13.42	<b>3rd Floor SqFt</b>	0	<b>Walk-Out</b>	Yes
<b>Bedroom #2 Size</b>	11x11	<b>2nd Floor SqFt</b>	1009	<b>Basement</b>	
<b>Bedroom #3 Size</b>	11 x 11	<b>Main Floor SqFt</b>	1348	<b>Grade School</b>	Prairie Queen
<b>Bedroom #4 Size</b>	11 x 11	<b>Total Finished SqFt</b>	2357	<b>Jr.High School</b>	Liberty
<b>Family Room Size</b>	8.75 x 7.75	<b>Finished Below Grade</b>	0	<b>High School</b>	Papillion-La Vista
<b>Other Room 1 Size</b>	11 x 11	<b>Lot Dimensions</b>	135x80.16		



**Sharon Bain**  
 CBSHOME  
 Sharon.Bain@cbshome.com  
 402-216-7202



**The Beers Team**  
 CBSHOME  
 Beers.Team@cbshome.com  
 402-681-5420

Information has not been verified, is not guaranteed and is Copyright (c) 2018 CBSHOME