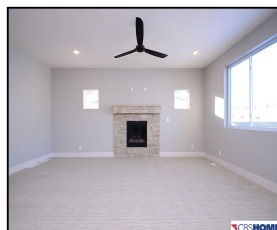
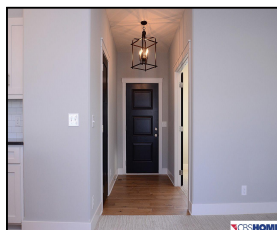
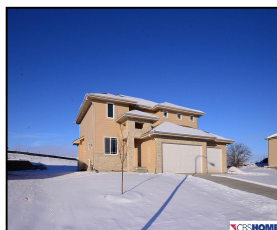


11732 S 111th Street

\$329,900



## Remarks

Contract pending. Dynasty Home, new model for sale, 2 sty Pinehurst 2334 plan. Includes 4 BD, 3 BA, 3 car and you will love the open fields behind this house with views that go on for miles. Home is walking distance to Papio South HS and dog park. Less than 5 min. to Walnut Creek rec area. With Offutt AFB, Shadow Lake mall, Werner Park baseball and the zoo also within minutes. This is the place to start your "Staycation". Hurry, buyer still has time to select exterior paint color.

## Features & Amenities

<b>County</b>	Douglas County	<b>Bedrooms</b>	4	<b>MLS#</b>	21800021
<b>Subdivision</b>	Southbrook	<b>Bathrooms</b>	3	<b>Status</b>	ACTIVE
<b>Living Room Size</b>	14.42 x 17.71	<b># of Rooms</b>	7	<b>Tax Amount</b>	\$733
<b>Dining Room size</b>		<b># of Fireplaces</b>	1	<b>Tax Year</b>	\$2,017
<b>Kitchen Size</b>	14.34 x 20.08	<b>Garage Spaces</b>	3	<b>Year Built</b>	2017
<b>Master Bedroom Size</b>	15.84 x 13.21	<b>3rd Floor SqFt</b>	0	<b>Walk-Out</b>	No
<b>Bedroom #2 Size</b>	12.62 x 13.46	<b>2nd Floor SqFt</b>	1254	<b>Basement</b>	
<b>Bedroom #3 Size</b>	12.50 x 9.84	<b>Main Floor SqFt</b>	1080	<b>Grade School</b>	Walnut Creek
<b>Bedroom #4 Size</b>	12.67 x 10.17	<b>Total Finished SqFt</b>	2334	<b>Jr.High School</b>	Papillion
<b>Family Room Size</b>		<b>Finished Below Grade</b>	0	<b>High School</b>	Papillion-La Vista South
<b>Other Room 1 Size</b>	10.17 x 9.67	<b>Lot Dimensions</b>	132.1 x 76.9 x 133.2 x 76.9		



**Sharon Bain**  
 CBSHOME  
 Sharon.Bain@cbshome.com  
 402-216-7202



**The Beers Team**  
 CBSHOME  
 Beers.Team@cbshome.com  
 402-681-5420

Information has not been verified, is not guaranteed and is Copyright (c) 2018 CBSHOME