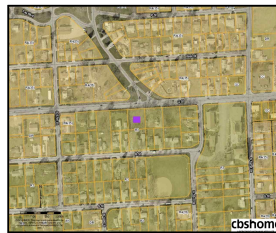
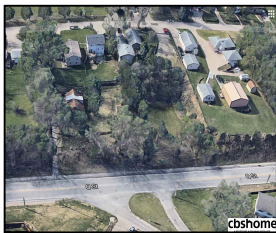
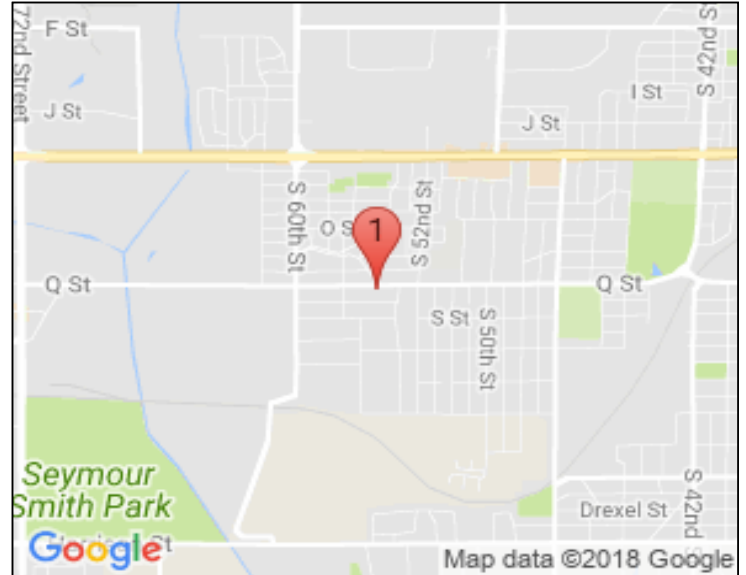


5417 Q Street

\$19,500



Property Information	
Address	5417 Q Street
City	Philadelphia
State	PA
Zip	19143
County	Douglas
Subdivision	South Side Acres
MLS#	21722483
Status	ACTIVE
Tax Amount	\$395
Tax Year	\$2,016
Year Built	
Walk-Out	
Basement	
Grade School	Ashland Park/Robbins
Jr. High School	Bryan
High School	Bryan

Remarks

Nearly 1/2 acre of prime residential ground in booming "South-O"! Build, build, build, to you heart's content - R3 Zoning. Water stubbed out on lot. \$1700 fee for water hookup. Sewer nearby which new owner could connect to but would need to verify specifics with city.

Features & Amenities

County	Douglas County	Bedrooms		MLS#	21722483
Subdivision	South Side Acres	Bathrooms		Status	ACTIVE
Living Room Size		# of Rooms		Tax Amount	\$395
Dining Room size		# of Fireplaces		Tax Year	\$2,016
Kitchen Size		Garage Spaces		Year Built	
Master Bedroom Size		3rd Floor SqFt		Walk-Out	
Bedroom #2 Size		2nd Floor SqFt		Basement	
Bedroom #3 Size		Main Floor SqFt		Grade School	Ashland Park/Robbins
Bedroom #4 Size		Total Finished SqFt		Jr. High School	Bryan
Family Room Size		Finished Below Grade		High School	Bryan
Other Room 1 Size		Lot Dimensions	130x138.5		



Jason Birnstihl
 CBSHOME
 jason.birnstihl@cbshome.com
 402-669-0415

Information has not been verified, is not guaranteed and is Copyright (c) 2018 CBSHOME