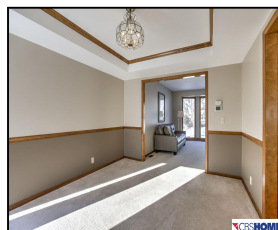
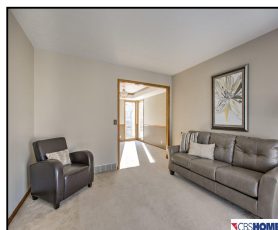
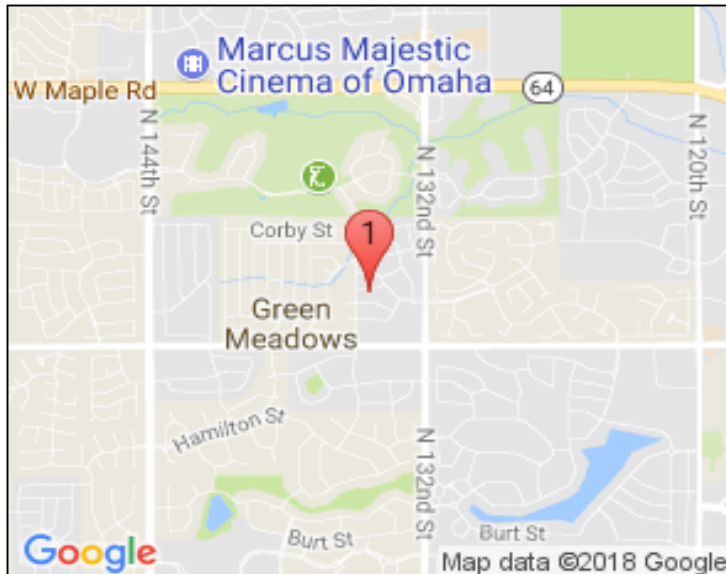
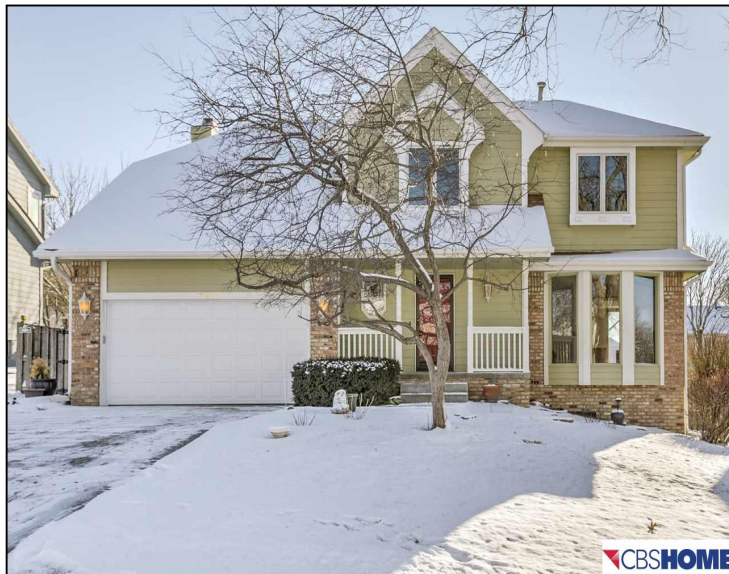


13433 Sherwood Avenue

\$265,000



## Remarks

CONTRACT PENDING. Terrific Two Story in Sunridge! Kitchen features New Granite (2017), SS appliances (2016), New backsplash & light fixtures. Dinette has Pella Slider (2015) that opens to deck (stained 2017) & fenced backyard. Family Room has brick fireplace with built-ins. Formal LR & DR on main. New Interior Paint (2017), New Exterior Paint (2011), New Roof (in Spring 2018) & Water Softener (2017), HVAC (2012). Prepare to be Impressed!

## Features & Amenities

<b>County</b>	Douglas County	<b>Bedrooms</b>	4	<b>MLS#</b>	21722344
<b>Subdivision</b>	Sunridge	<b>Bathrooms</b>	3	<b>Status</b>	PENDING
<b>Living Room Size</b>	13.5x13.5	<b># of Rooms</b>	10	<b>Tax Amount</b>	\$4,760
<b>Dining Room size</b>	14.2x11.4	<b># of Fireplaces</b>	1	<b>Tax Year</b>	\$2,017
<b>Kitchen Size</b>	14.2x10	<b>Garage Spaces</b>	2	<b>Year Built</b>	1988
<b>Master Bedroom Size</b>	24x15.10	<b>3rd Floor SqFt</b>	0	<b>Walk-Out</b>	No
<b>Bedroom #2 Size</b>	13x11.10	<b>2nd Floor SqFt</b>	1275	<b>Basement</b>	
<b>Bedroom #3 Size</b>	13.4x10	<b>Main Floor SqFt</b>	1188	<b>Grade School</b>	Picotte
<b>Bedroom #4 Size</b>	13.10x12	<b>Total Finished</b>	2915	<b>Jr.High School</b>	Buffett
<b>Family Room Size</b>	19.10x15	<b>SqFt</b>		<b>High School</b>	Burke
<b>Other Room 1 Size</b>	13.1x10	<b>Finished Below</b>	452		
		<b>Grade</b>			
		<b>Lot Dimensions</b>	122x75		



Karen Jennings

CBSHOME

Karen.Jennings@cbshome.com

402-290-6296

Information has not been verified, is not guaranteed and is Copyright (c) 2014 CBSHOME



REAL ESTATE | TITLE | MORTGAGE | INSURANCE

MOVE WITH THE BEST.

